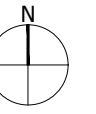


The scaling of this drawing cannot be assured

Revision	Date	Drn	Ckd
F Application Boundary updated	23.08.24	KT	BW



-  Application Boundary
-  Public Open Space (including, as required: access, sports and play facilities, drainage, landscaping, retained vegetation, Pedestrian/cycle links, ecological enhancements, and all necessary infrastructure)
-  Existing trees and hedgerows to be retained, with crossing points for necessary infrastructure
-  Built development area (See: Land Use & Access Parameter Plan)
-  Country Park
-  Existing footpath (PROW) to be retained and re-aligned as required.
-  Proposed footpath/cycleway
-  Strategic pedestrian/cycle link
-  Existing watercourses to be retained

Project
**Lower Bullingham
 Hereford**
 Drawing Title
Green Infrastructure Parameter Plan

Date	Scale	Drawn by	Check by
23.08.24	1:5000 @A3	KT	BW
Project No	Drawing No	Revision	
35304	BL-M-18	F	




Stantec

Stantec UK Limited
 101 Victoria Street
 Bristol
 BS1 6PU
 T: 0117 929 9677